



TYPE WS02-CFSC1-E Network Configurator

Installation Guide

Thank you for purchasing the WS02-CFSC1-E Network Configurator. This installation guide describes how to install the WS02-CFSC1-E. Please refer to the following manual for network establishment procedures and precautions for the Network Configurator:

- System Configuration Manual (Cat. No. Z905-E1)
- Operation Manual (Cat. No. Z919-E1)
- Instruction Reference Manual (Cat. No. Z920-E1)

The following operation manuals are also available:

- Safety Network Controller Operation Manual (Cat. No. Z906-E1)
- Safety I/O Terminal Operation Manual (Cat. No. Z904-E1)
- DeviceNet Operation Manual (Cat. No. W267-E1)

Please keep this installation guide in a convenient location for easy reference.

OMRON Corporation

1175839-2 B

1. System Requirements

To use the Network Configurator, the following specifications are required.

Item	Specification
Computer	IBM PC/AT or compatible with the 300 MHz or faster processor 128 MB or more of RAM 40 MB or more of available hard disk space Super VGA (800 x 600) or better display CD-ROM drive or DVD drive
OS	Windows® 2000 Windows® XP
COM Port	Either of the following COM ports is required. •USB port: For online connection via the USB port (USB1.1) on NE1A series or NEOA series •DeviceNet Interface Card (3G8E2-DRM21-V1): For online connection via DeviceNet

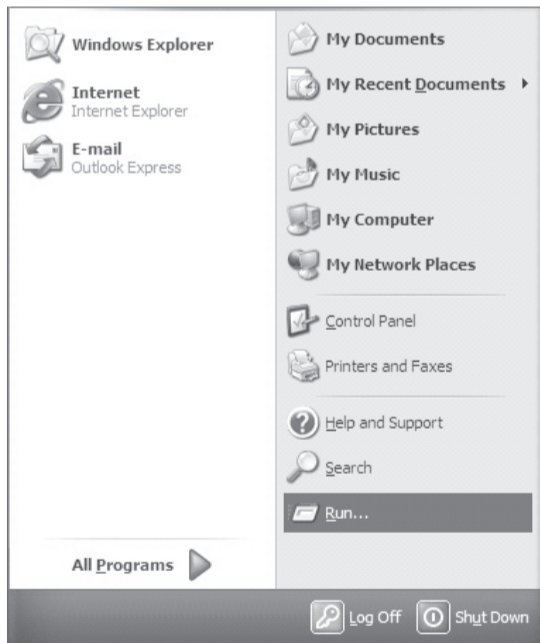
- It requires administrative privileges to install this software.
 - It requires administrative privileges to create new user defined FunctionBlock and to import a user defined FunctionBlock.
- Please logon to Windows with administrative rights.

2. Installation

2.1. Installing the Network Configurator

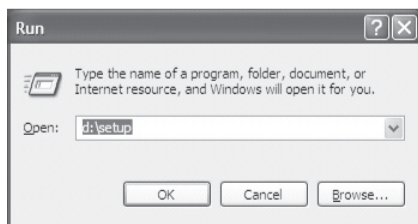
STEP1

Insert the Network Configurator CD-ROM into the CD-ROM drive of the computer. Select Run from the Windows Start Menu.



STEP2

Specify setup in the CD-ROM drive as the name of the program to execute and click the OK Button. In the following example, the CD-ROM drive is drive d.

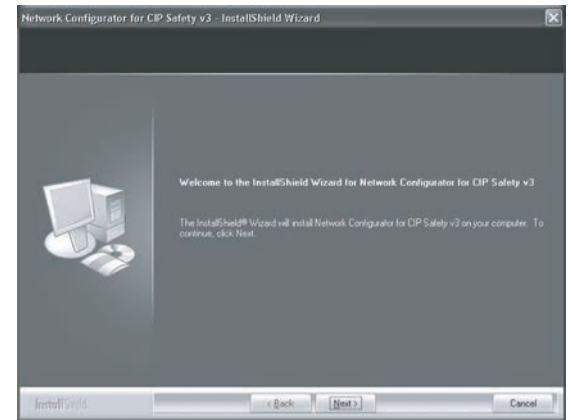


If your computer has older version of Network Configurator (v1.x / v2.x), following message will appear. In this case, or in case that you have installed trial version, please perform the action that is described in [3.2 Uninstalling the Network Configurator].



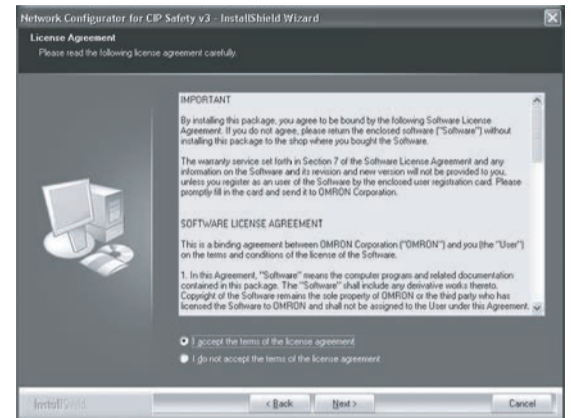
STEP3

The install program for the Network Configurator will start. Click the Next Button.



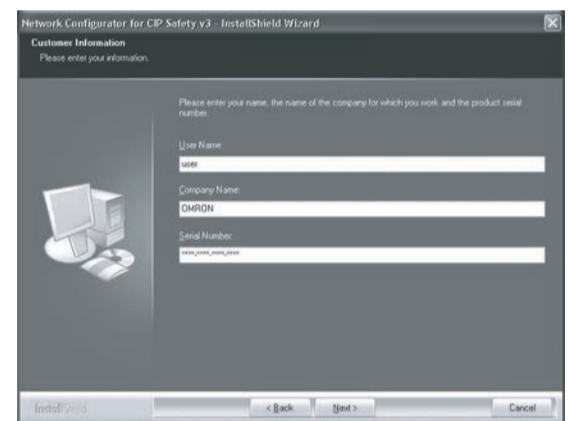
STEP4

The License Agreement will be displayed. Confirm the contents and, if you agree, click the Next Button.



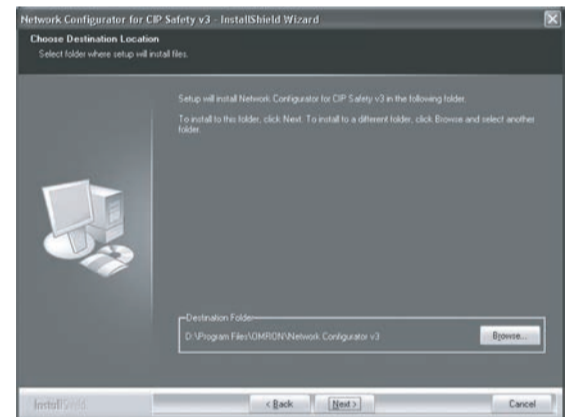
STEP5

Enter the User Name, Company Name, and Serial Number of the license and then click the Next Button. The serial number should be 19 characters, including the alphanumeric characters and the hyphen. It is printed on the License Certificate. The serial number is case-sensitive; please pay attention to case.



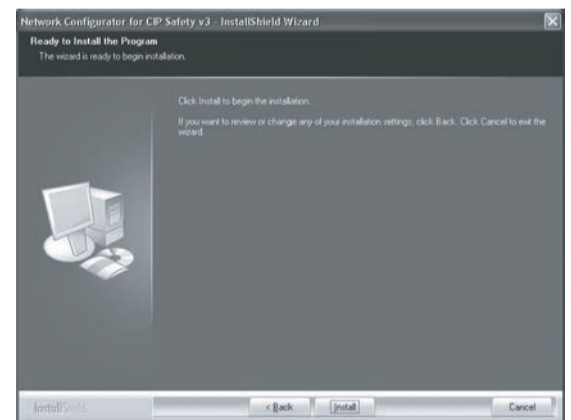
STEP6

Specify the folder in which to install the Network Configurator, and click the Next Button.



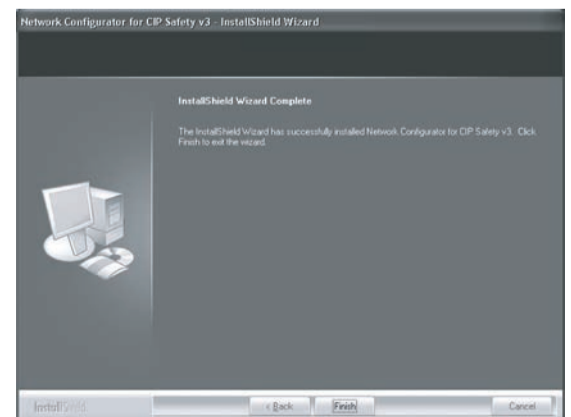
STEP7

If the entered information is correct, click the Install Button to start installation of the Network Configurator.



STEP8

Click the Finish Button to complete installation of the Network Configurator.



2.2. Installing the Safety Network Controller USB Port Driver

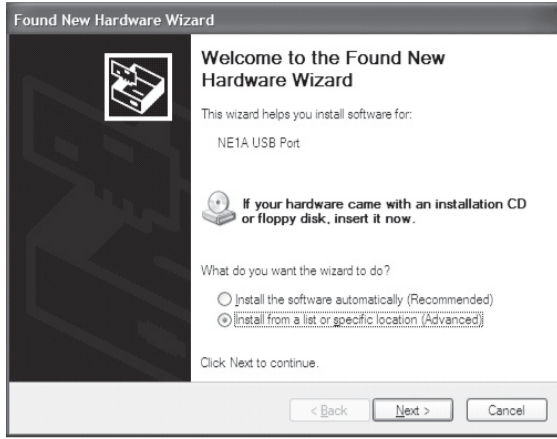
To connect the Network Configurator to DeviceNet via the USB port on the Safety Network Controller, the user must install the USB port driver on the user's computer.

STEP1

Turn ON the power supply to the Safety Network Controller and connect it to the computer by the USB cable.

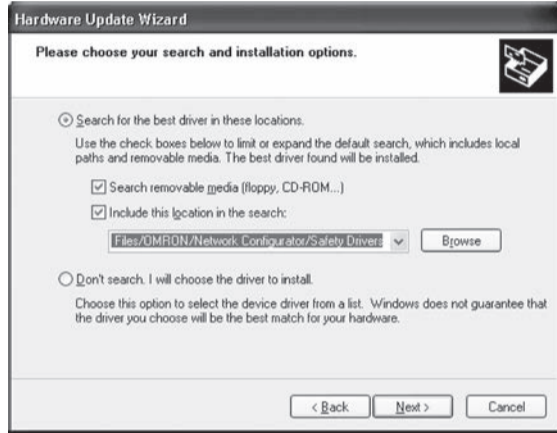
STEP2

New hardware will be found, and the Hardware Wizard will start. Select the Install from a list or specific location option and click the Next Button. Each driver name is displayed. NE0A: NE0A USB Port Driver NE1A: NE1A USB Port Driver NE2A: NE2A USB Port Driver



STEP3

Select the Search for the best driver in these locations option to install the driver and select the Include this location in the search check box. Specify (install folder) %Safety Drivers %USB% folder on CD-ROM drive for the folder to search in the driver and click the Next Button. Note: Initial setting of install folder is: C:\Program Files\Network Configurator\



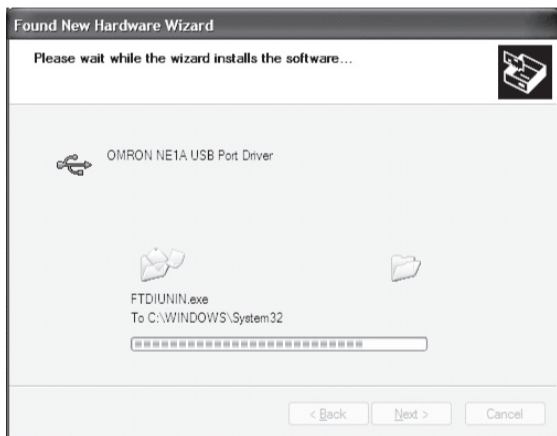
STEP4

A warning message may be displayed that indicates the driver has not passed Windows Logo testing. If such a warning message is displayed, ignore it and click the Continue Anyway Button to go on to the next step.



STEP5

The driver will be installed.



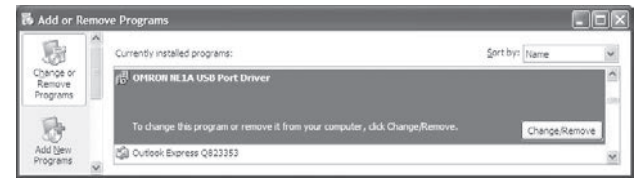
STEP6

Click the Finish Button to complete installation of the USB port driver.



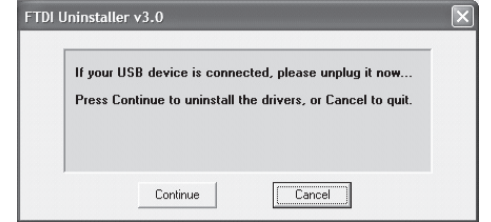
STEP2

From the list of the installed programs, select OMRON NE1A USB Port Driver and click the Change/Remove Button. Note: if USB cable is connected with NE0A series, following sentence is displayed. "NE0A USB Port Driver"



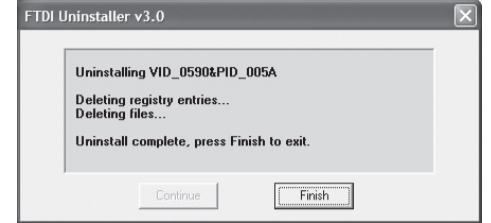
STEP3

The uninstall program for the USB port driver will start. Click the Continue Button.



STEP4

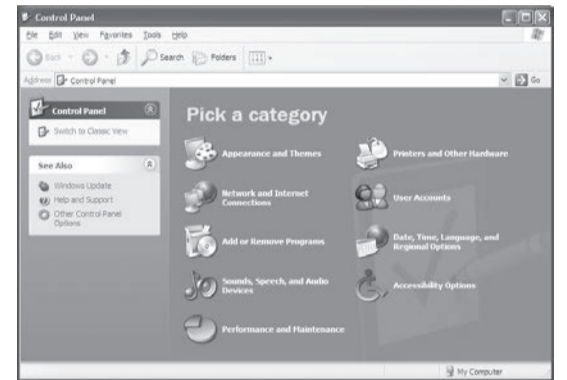
Deleting the driver will be completed in a short period of time. Click the Finish Button to complete uninstalling the USB port driver.



3.2. Uninstalling the Network Configurator

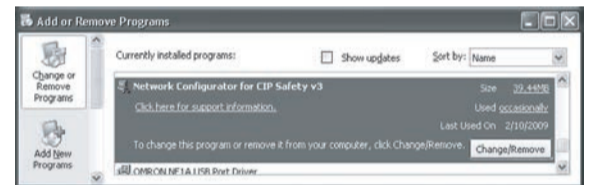
STEP1

Open the Control Panel and select Add or Remove Programs.



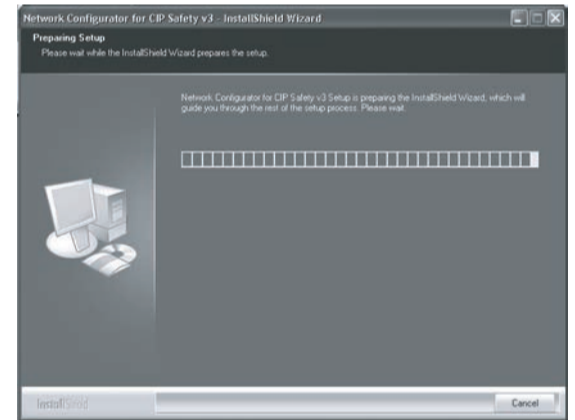
STEP2

From the list of the installed programs, select Network Configurator for DeviceNet Safety and click the Change/Remove Button.



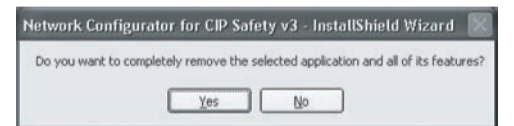
STEP3

The uninstall program for the Network Configurator will start.



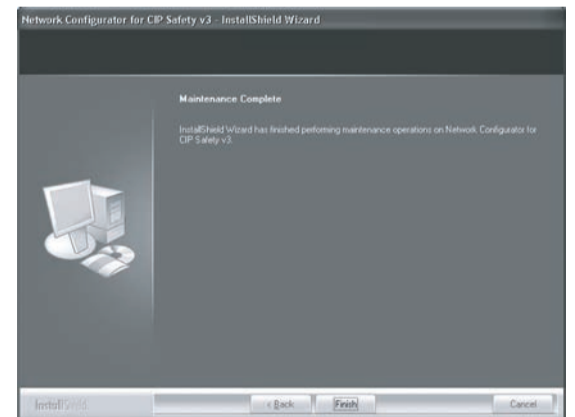
STEP4

A confirmation window will be displayed. Click the Yes Button to uninstall the Network Configurator.



STEP5

Click the Finish Button to complete uninstalling the Network Configurator.

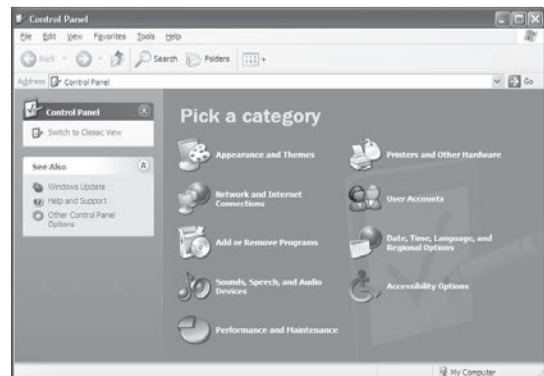


3. Uninstallation

3.1. Uninstalling the Safety Network Controller USB Port Driver

STEP1

Open the Control Panel and select Add or Remove Programs.



OMRON Industrial Automation Company

Regional Headquarters

OMRON EUROPE B.V.

Wegalaan 67-69-2132 JD Hoofddorp
THE Netherlands
Tel : (31)2356-81-300 / FAX : (31)2356-81-388

OMRON ASIAPACIFIC PTE.LTD.
No.438A Alexandra Road # 05-05/09 (Lobby 2),
Alexandra Technopark,
Singapore 119967
Tel : (65)6835-3011 / FAX : (65)6835-388

Note: Specifications subject to change without notice.
Printed in Japan

OMRON SCIENTIFIC TECHNOLOGIES INC.

6550 Dumbarton Circle, Fremont
CA 94555-3605 U.S.A.
Tel : (1)510-608-3400 / FAX : (1)510-744-1442

OMRON (CHINA) CO., LTD.
Room 2211, Bank of China Tower,
200 Yin Cheng Zhong Road,
PuDong New Area, Shanghai, 200120, China
Tel : (86)21-5037-2222 / FAX : (86)21-5037-2200